



**ACANA™**

**NUTRITION THEY NEED,  
FLAVOUR THEY LOVE**

WHO WE ARE

# WELCOME TO ACANA™



**ACANA goes above and beyond in crafting our dog food**, including sourcing high quality animal proteins like fresh or raw\* poultry, meats, wild-caught fish. Our recipes are also balanced with fresh vegetables, fruits and botanicals to help your dog live a full and healthy life.



*Protein-rich  
Quality animal ingredients*

Ingredient example from ACANA Adult Dog. Animal protein sources depicted in fresh form before processing.

Proportions and quantities not representative of contents of one package or serving. Cuts may vary. See ingredient list.

\*Our fresh ingredients use refrigeration as the sole method of preservation. Our raw ingredients are frozen at the peak of freshness to preserve nutrients.



# WHAT IS ACANA™ ?



## ACANA'S QUALITY *ingredients for dogs :*

**We're dedicated to making quality ACANA pet food from start to finish with the best ingredients.**

Our foods are crafted with fresh or raw\* quality animal ingredients balanced with whole fresh fruit and vegetables to help support your dog's full and healthy life as a happy member of your family.

**We're Transparent About Our Ingredients**  
With ACANA dog food, we're proud of the fact that we source only quality ingredients from our trusted suppliers, in recipes we control from start to finish. By providing high inclusions of animal protein balanced with fresh fruits, vegetables and botanicals, our ACANA dog food is as nourishing as it is satisfying.

\*Our fresh ingredients use refrigeration as the sole method of preservation. Our raw ingredients are frozen at the peak of freshness to preserve nutrients.



**NO ARTIFICIAL COLOURS,  
FLAVOURS OR PRESERVATIVES  
ADDED IN OUR KITCHEN**

# WHAT IS ACANA™ ?



*Farm-fresh*  
**FRUIT  
& VEGETABLES**

## **MADE WITH FRESH OR RAW INGREDIENTS**

**FRESH:** Our fresh ingredients use refrigeration as the sole method of preservation.

**RAW:** Our raw ingredients are frozen at the peak of freshness to preserve nutrients.



## **EVERY ACANA™ DOG RECIPE**

*includes :*

- At least **50%\*** quality animal ingredients
- Recipes balanced with **fresh vegetables, fruit, botanicals & nutrients**
- **Added vitamins and minerals**, natural preservatives and probiotics
- A delicious variety of recipes and a range of options **to suit every dog**

\*Approximate and derived from the unprocessed state of the ingredients.

## **OUR RECIPES**

*never include :*

- Artificial flavours, colours, or preservatives added in our kitchens.
- **No soy, corn, tapioca** or wheat ingredients added in our kitchens.

Ingredient example from ACANA Adult Dog. Animal protein sources depicted in fresh form before processing. Proportions and quantities not representative of contents of one package or serving. Cuts may vary. See ingredient list.



# ACANA™ TRANSITIONING

**Dogs are often fed the same food for a long period of time, which means a sudden food change makes it difficult for their digestive systems to adapt.**

That's why it's important to introduce new food gradually. Going slowly will give your dog time to adjust to their new food and will also reduce the chances of digestive upset. Start by mixing 25 percent new food with 75 percent old food. Slowly increase the new food proportionately over the next 5-7 days until you are feeding 100 percent new food.



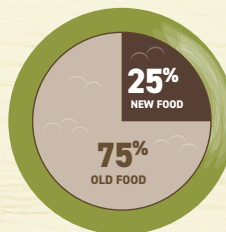
## ROTATIONAL DIET

**Keep things exciting at mealtime by rotating the ACANA recipes you feed your dog.** This will allow your best friend to enjoy a variety of animal proteins in delicious and nourishing new flavours. Don't transition too abruptly, though — start by replacing 25% of the old food with the new recipe and gradually increase the amount over time. Puppies are recommended to remain on *puppy diet*.

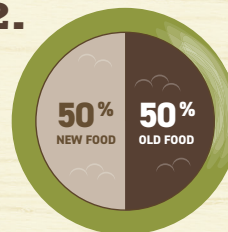
## TRANSITIONAL

*feeding :*

1.



2.



3.



4.



# WHAT WE WANT YOU TO REMEMBER

1



## **ACANA's** *dog recipes:*

Always include at least **50% quality animal ingredients** to be balanced and rich in protein.

2



## **ACANA** *doesn't include:*

Potato, soy, corn, wheat or tapioca.

3



## **ACANA** *offers:*

A solution for every dog.

4



## **OUR INGREDIENTS** *matter:*

We have chosen ingredients of superior quality such as **wild-caught fish** and **farm-fresh fruit and vegetables**.






**ACANA™**

---

**NUTRITION THEY NEED,  
FLAVOUR THEY LOVE**

# PRODUCT RANGE CLASSICS

	 <b>PRAIRIE POULTRY</b>	 <b>RED MEAT</b>	 <b>WILD COAST</b>
SIZE	2 kg 6 kg 11,4 kg, 17 kg	2 kg 6 kg 11,4 kg, 17 kg	2 kg 6 kg 11,4 kg, 17 kg
TOP 5 INGREDIENTS	Chicken meal, oat groats, fresh chicken, fresh chicken giblets (liver, heart), raw turkey.	Lamb meal, oat groats, raw pork, pork meal, raw beef.	Herring meal, oat groats, raw whole herring, raw whole hake, fish oil.
HELPFUL INFORMATION	ACANA Prairie Poultry is made with chicken and turkey, which are ingredients that your dog needs to stay happy, healthy, and strong. Good introductory diet for dogs transitioning to ACANA.	ACANA Red Meat is made with nourishing protein from animal ingredients from lamb, pork and beef, giving your dog everything they need to stay healthy, happy, and thriving. Great for picky dogs.	ACANA Wild Coast is made with nourishing protein and Omega fatty acids from wild-caught herring, and hake. Great for skin and coat health.



# ACANA™

## CLASSICS



# PRAIRIE POULTRY

 FOR DOGS OF ALL BREEDS & LIFE STAGES

ACANA Prairie Poultry is made with chicken and turkey, which are ingredients that your dog needs to stay happy, healthy, and strong.

## FEATURES



### ANTIOXIDANTS

FROM FRESH FRUITS &  
VEGETABLES + VITAMIN C  
HELP SUPPORT IMMUNE FUNCTION



### PREBIOTICS & FIBRE

HELP SUPPORT  
HEALTHY DIGESTION



### OMEGA-3 FATTY ACIDS

FROM FISH OIL HELP SUPPORT  
HEALTHY SKIN & COAT

## Made with FRESH OR RAW\*\* INGREDIENTS



CHICKEN



TURKEY



VEGETABLES  
& FRUIT

## BIOLOGICALLY APPROPRIATE RATIOS

50%\* QUALITY ANIMAL INGREDIENTS

50%\* WHOLESOME GRAINS, VEGETABLES, FRUITS,  
BOTANICALS & NUTRIENTS

0% NO ARTIFICIAL PRESERVATIVES, FLAVOURS  
OR COLOURS ADDED IN OUR KITCHEN

## ANALYTICAL CONSTITUENTS

Crude protein	29 %
Fat content	17 %
Crude fibre	5 %
Crude ash	7.5 %
Moisture	12 %
Calcium	1.2 %
Phosphorus	0.9 %
Omega-6 fatty acids	2.6 %
Omega-3 fatty acids	0.5 %
DHA / EPA	0.1 % / 0.1 %
Carbohydrate NFE	29.5 %

\*Approximate and derived from the unprocessed state of the ingredients.

\*\*Our fresh ingredients use refrigeration as the sole method of preservation and our raw ingredients are frozen at the peak of freshness to preserve nutrients.

For more information please contact our Customer Care Team at [customer care@championpetfoods.com](mailto:customer care@championpetfoods.com).

# ACANA™

## CLASSICS



## RED MEAT

FOR DOGS OF ALL BREEDS  
& LIFE STAGES

All modern dogs evolved from the grey wolf, and their anatomy remains the same, requiring the same protein-rich diet as their ancestors. **ACANA Red Meat** is made with nourishing protein from animal ingredients from lamb, pork and beef, giving your dog everything they need to stay healthy, happy, and thriving.

### FEATURES



**ANTIOXIDANTS**  
FROM FRESH FRUITS &  
VEGETABLES + VITAMIN C  
HELP SUPPORT IMMUNE FUNCTION



**PREBIOTICS &  
FIBRE**  
HELP SUPPORT  
HEALTHY DIGESTION



**OMEGA-3 FATTY  
ACIDS**  
FROM FISH OIL HELP SUPPORT  
HEALTHY SKIN & COAT

### Made with FRESH OR RAW\*\* INGREDIENTS



YORKSHIRE  
PORK



BEEF



VEGETABLES  
& FRUIT

### BIOLOGICALLY APPROPRIATE RATIOS

**50%\*** QUALITY ANIMAL INGREDIENTS

**50%\*** WHOLESOME GRAINS, VEGETABLES, FRUITS,  
BOTANICALS & NUTRIENTS

**0%** NO ARTIFICIAL PRESERVATIVES, FLAVOURS  
OR COLOURS ADDED IN OUR KITCHEN

### ANALYTICAL CONSTITUENTS

Crude protein	29 %
Fat content	17 %
Crude fibre	5 %
Crude ash	7.5 %
Moisture	12 %
Calcium	1.6 %
Phosphorus	1.1 %
Omega-6 fatty acids	2.5 %
Omega-3 fatty acids	0.8 %
DHA / EPA	0.15 % / 0.15 %
Carbohydrate NFE	29.5 %

\*Approximate and derived from the unprocessed state of the ingredients.

\*\*Our fresh ingredients use refrigeration as the sole method of preservation and our raw ingredients are frozen at the peak of freshness to preserve nutrients.

For more information please contact our Customer Care Team at [customer care@championpetfoods.com](mailto:customer care@championpetfoods.com).



# ACANA™

## CLASSICS



# WILD COAST

## FOR DOGS OF ALL BREEDS & LIFE STAGES

All dogs require a diet that is rich in protein and nutrients from animal ingredients, like fish.  
**ACANA Wild Coast** is made with nourishing protein and Omega fatty acids from wild-caught herring, and hake.

### FEATURES



**ANTIOXIDANTS**  
FROM FRESH FRUITS &  
VEGETABLES + VITAMIN C  
HELP SUPPORT IMMUNE FUNCTION



**PREBIOTICS &  
FIBRE**  
HELP SUPPORT  
HEALTHY DIGESTION



**OMEGA-3 FATTY  
ACIDS**  
FROM FISH OIL HELP SUPPORT  
HEALTHY SKIN & COAT

### ANALYTICAL CONSTITUENTS

Crude protein	29 %
Fat content	17 %
Crude fibre	5 %
Crude ash	7.5 %
Moisture	12 %
Calcium	1.2 %
Phosphorus	0.9 %
Omega-6 fatty acids	2.4 %
Omega-3 fatty acids	1.4 %
DHA / EPA	0.4 % / 0.3 %
Carbohydrate NFE	29.5 %

Made with  
**RAW**™

### INGREDIENTS



HERRING



HAKE



VEGETABLES  
& FRUIT

### BIOLOGICALLY APPROPRIATE RATIOS

**50%\*** QUALITY ANIMAL INGREDIENTS

**50%\*** WHOLESOME GRAINS, VEGETABLES, FRUITS,  
BOTANICALS & NUTRIENTS

**0%** NO ARTIFICIAL PRESERVATIVES, FLAVOURS  
OR COLOURS ADDED IN OUR KITCHEN

\*Approximate and derived from the unprocessed state of the ingredients.










\*Our fresh ingredients use refrigeration as the sole method of preservation and our raw ingredients are frozen at the peak of freshness to preserve nutrients.

For more information please contact our Customer Care Team at [customer care@championpetfoods.com](mailto:customer care@championpetfoods.com).

# PRODUCT RANGE

**DOG**



									
	<b>PUPPY</b>	<b>PUPPY LARGE BREED</b>	<b>PUPPY SMALL BREED</b>	<b>ADULT DOG</b>	<b>ADULT LARGE BREED</b>	<b>ADULT SMALL BREED</b>	<b>SENIOR</b>	<b>SPORT &amp; AGILITY</b>	<b>LIGHT &amp; FIT</b>
<b>SIZE</b>	340 g 2 kg, 6 kg 11,4 kg 17 kg	11,4 kg 17 kg	2 kg 6 kg	2 kg 6 kg 11,4 kg 17 kg	11,4 kg 17 kg	340 g 2 kg 6 kg	2 kg 6 kg 11,4 kg	11,4 kg 17 kg	2 kg 6 kg 11,4 kg
<b>TOP 5 INGREDIENTS</b>	Fresh chicken, chicken meal, whole red lentils, whole green peas, fresh chicken giblets (liver, heart)	Fresh chicken, chicken meal, whole red lentils, whole green peas	Fresh chicken, chicken meal, whole red lentils, whole green peas, fresh chicken giblets (liver, heart)	Fresh chicken, chicken meal, whole red lentils, whole green peas	Fresh chicken, chicken meal, whole red lentils, whole green peas, turkey meal	Fresh chicken, chicken meal, whole red lentils, whole green peas, whole chickpeas	Fresh chicken, chicken meal, whole red lentils, whole green peas, turkey meal	Fresh chicken, chicken meal, whole red lentils, whole green peas	Fresh chicken, chicken meal, red lentils, whole green peas, pea fibre
<b>HELPFUL INFORMATION</b>	Meets the nutritional needs for puppies of all breeds, from toy to giant.	High in protein, and moderate in fat to promote slow, steady growth in large-breed puppies.	High in protein, fat and calories. Small kibble size ideal for small-breed puppies.	A good introductory diet for dogs transitioning to ACANA.	High in protein, and moderate in fat to help maintain lean muscle mass for large-breed dogs.	High in protein, with a small kibble size for small-breed dogs.	High in protein, and moderate in fat to support lean muscle mass in senior dogs.	High in protein, fat and calories to help maintain energy in highly active or working dogs.	Lowest in fat and calories. Great option for healthy weight management.

\* Produced in a facility that processes grains.



# ACANA™

## DOG



## PUPPY FOR PUPPIES OF ALL BREEDS EXCEPT FOR GREAT DANE PUPPIES PRIOR TO 14 WEEKS

Your growing puppy needs protein and fat from animal ingredients, to support their rapid development. **ACANA Puppy** is brimming with fresh chicken and eggs from prairie farms, and raw flounder delivered fresh or raw\*\*\* by people we know and trust. ACANA delivers nutrients naturally, in their most nourishing form, for peak health and development.

### FEATURES

1. **70%\* QUALITY ANIMAL INGREDIENTS** | PROTEIN-RICH QUALITY ANIMAL INGREDIENTS
2. **FRESH OR RAW\*\* POULTRY, WILD-CAUGHT OR SUSTAINABLY FARMED FISH AND EGGS**
3. **VEGETABLES, FRUIT & BOTANICALS** | FRESH WHOLE PUMPKIN, GREENS, APPLES & PEARS
4. **NO ARTIFICIAL PRESERVATIVES, FLAVOURS OR COLOURS ADDED IN OUR KITCHEN**
5. **NO SOY, CORN, TAPIOCA OR WHEAT INGREDIENTS**

### ANALYTICAL CONSTITUENTS

Crude protein	33 %	Phosphorus	1.1 %
Fat content	20 %	Omega-6 fatty acids	2.7 %
Crude fibre	5 %	Omega-3 fatty acids	1 %
Crude ash	7 %	DHA / EPA	0.3 % / 0.3 %
Moisture	12 %	Carbohydrate NFE	23 %
Calcium	1.5 %		

## 70%\*

QUALITY ANIMAL  
INGREDIENTS

+

## 30%\*

VEGETABLES, FRUIT,  
BOTANICALS & NUTRIENTS\*\*

+

## 0%\*

NO ARTIFICIAL COLOURS, FLAVOURS  
OR PRESERVATIVES ADDED IN OUR KITCHEN

\*Approximate and derived from the unprocessed state of the ingredients.

\*\*Our fresh ingredients use refrigeration as the sole method of preservation and our raw ingredients are frozen at the peak of freshness to preserve nutrients.

\*\*\*Produced in a facility that processes grains.

For more information please contact our Customer Care Team at [customer@championpetfoods.com](mailto:customer@championpetfoods.com).

# ACANA™

## DOG



# PUPPY LARGE BREED FOR PUPPIES WEIGHING OVER 25 KGS AT MATURITY

Your large-breed puppy has unique nutritional needs in order to maintain lean muscle, including more protein from quality animal ingredients and essential minerals. **ACANA Puppy Large Breed** is packed with chicken and raw flounder, with the added nutrition of delicious eggs, for a diet that gives your growing puppy everything they need to grow up healthy, happy, and strong.

## FEATURES

1. **70%\* QUALITY ANIMAL INGREDIENTS** | PROTEIN-RICH QUALITY ANIMAL INGREDIENTS
2. **FRESH OR RAW\*\* POULTRY, WILD-CAUGHT OR SUSTAINABLY FARMED FISH AND EGGS**
3. **VEGETABLES, FRUIT & BOTANICALS** | FRESH WHOLE PUMPKIN, GREENS, APPLES & PEARS
4. **NO ARTIFICIAL PRESERVATIVES, FLAVOURS OR COLOURS ADDED IN OUR KITCHEN**
5. **NO SOY, CORN, TAPIOCA OR WHEAT INGREDIENTS**

## ANALYTICAL CONSTITUENTS

Crude protein	33 %	Phosphorus	1 %
Fat content	15 %	Omega-6 fatty acids	2.4 %
Crude fibre	6 %	Omega-3 fatty acids	1.2 %
Crude ash	7 %	DHA / EPA	0.4 % / 0.4 %
Moisture	12 %	Carbohydrate NFE	27 %
Calcium	1.4 %		

### 70%\*

QUALITY ANIMAL  
INGREDIENTS

+

### 30%\*

VEGETABLES, FRUIT,  
BOTANICALS & NUTRIENTS\*\*

+

### 0%\*

NO ARTIFICIAL COLOURS, FLAVOURS  
OR PRESERVATIVES ADDED IN OUR KITCHEN

\*Approximate and derived from the unprocessed state of the ingredients.

\*\*Our fresh ingredients use refrigeration as the sole method of preservation and our raw ingredients are frozen at the peak of freshness to preserve nutrients.

\*\*\*Produced in a facility that processes grains.

For more information please contact our Customer Care Team at [customer care@championpetfoods.com](mailto:customer care@championpetfoods.com).

# ACANA™

## DOG

# PUPPY SMALL BREED

FOR PUPPIES WEIGHING  
UP TO 9 KGS AT MATURITY

Your small-breed puppy is growing fast, requiring a diet that is rich in protein and fat from fresh, whole animal ingredients to support proper development. Brimming with meat, organs, and bone from chicken and raw flounder, plus nourishing eggs delivered fresh or raw\*\* to our kitchen by people we know and trust, **ACANA Puppy Small Breed** has everything your growing puppy needs for optimal growth and development.

## FEATURES

1. **70%\* QUALITY ANIMAL INGREDIENTS** | PROTEIN-RICH QUALITY ANIMAL INGREDIENTS
2. **FRESH OR RAW\*\* POULTRY, WILD-CAUGHT OR SUSTAINABLY FARMED FISH AND EGGS**
3. **VEGETABLES, FRUIT & BOTANICALS** | FRESH WHOLE PUMPKIN, GREENS, APPLES & PEARS
4. **NO ARTIFICIAL PRESERVATIVES, FLAVOURS OR COLOURS ADDED IN OUR KITCHEN**
5. **NO SOY, CORN, TAPIOCA OR WHEAT INGREDIENTS**



## ANALYTICAL CONSTITUENTS

Crude protein	33 %	Phosphorus	1.1 %
Fat content	20 %	Omega-6 fatty acids	2.7 %
Crude fibre	5 %	Omega-3 fatty acids	1 %
Crude ash	7 %	DHA / EPA	0.3 % / 0.3 %
Moisture	12 %	Carbohydrate NFE	23 %
Calcium	1.5 %		

### 70%\*

QUALITY ANIMAL  
INGREDIENTS

+

### 30%\*

VEGETABLES, FRUIT,  
BOTANICALS & NUTRIENTS\*\*

+

### 0%\*

NO ARTIFICIAL COLOURS, FLAVOURS  
OR PRESERVATIVES ADDED IN OUR KITCHEN

\*Approximate and derived from the unprocessed state of the ingredients.

\*\*Our fresh ingredients use refrigeration as the sole method of preservation and our raw ingredients are frozen at the peak of freshness to preserve nutrients.

\*\*\*Produced in a facility that processes grains.

For more information please contact our Customer Care Team at [customer care@championpetfoods.com](mailto:customer care@championpetfoods.com).



# ACANA™

## DOG

## ADULT DOG FOR ADULT DOGS OF ALL BREEDS

Your dog is descended from the grey wolf and requires the same protein-rich diet in order to support peak health. Featuring chicken, raw flounder, and eggs that are delivered to our kitchen fresh or raw\*\*, **ACANA Adult Dog** is packed with the protein and nutrients your dog needs. ACANA delivers nutrients naturally, in their most nourishing form, keeping your dog happy, healthy, and strong.

### FEATURES

1. **60%\* QUALITY ANIMAL INGREDIENTS** | PROTEIN-RICH QUALITY ANIMAL INGREDIENTS
2. **FRESH OR RAW\*\* POULTRY, WILD-CAUGHT OR SUSTAINABLY FARMED FISH AND EGGS**
3. **VEGETABLES, FRUIT & BOTANICALS** | FRESH WHOLE PUMPKIN, GREENS, APPLES & PEARS
5. **NO ARTIFICIAL PRESERVATIVES, FLAVOURS OR COLOURS ADDED IN OUR KITCHEN**
6. **NO SOY, CORN, TAPIOCA OR WHEAT INGREDIENTS**

### ANALYTICAL CONSTITUENTS

Crude protein	29 %	Phosphorus	1 %
Fat content	17 %	Omega-6 fatty acids	2.6 %
Crude fibre	5 %	Omega-3 fatty acids	1 %
Crude ash	7 %	DHA	0.3 %
Moisture	12 %	EPA	0.3 %
Calcium	1.3 %	Carbohydrate NFE	30 %

## 60%\*

QUALITY ANIMAL  
INGREDIENTS

+

## 40%\*

VEGETABLES, FRUIT,  
BOTANICALS & NUTRIENTS\*\*

+

## 0%\*

NO ARTIFICIAL COLOURS, FLAVOURS  
OR PRESERVATIVES ADDED IN OUR KITCHEN

\*Approximate and derived from the unprocessed state of the ingredients.

\*\*Our fresh ingredients use refrigeration as the sole method of preservation and our raw ingredients are frozen at the peak of freshness to preserve nutrients.

\*\*\*Produced in a facility that processes grains.

For more information please contact our Customer Care Team at [customerccare@championpetfoods.com](mailto:customerccare@championpetfoods.com).



# ACANA™

## DOG



# ADULT LARGE BREED

FOR ADULT DOGS  
OVER 25 KGS

Due to their higher body mass, large breed dogs can experience extra stress on their joints. **ACANA Adult Large Breed** features rich sources of animal proteins to promote lean muscle mass, minimizing stress on bones and joints.

## FEATURES

1. **60%\* QUALITY ANIMAL INGREDIENTS** | PROTEIN-RICH QUALITY ANIMAL INGREDIENTS
2. **FRESH OR RAW\*\* POULTRY, WILD-CAUGHT OR SUSTAINABLY FARMED FISH AND EGGS**
3. **VEGETABLES, FRUIT & BOTANICALS** | FRESH WHOLE PUMPKIN, GREENS, APPLES & PEARS
4. **NO ARTIFICIAL PRESERVATIVES, FLAVOURS OR COLOURS ADDED IN OUR KITCHEN**
5. **NO SOY, CORN, TAPIOCA OR WHEAT INGREDIENTS**

## ANALYTICAL CONSTITUENTS

Crude protein	31 %	Phosphorus	1.1 %
Fat content	15 %	Omega-6 fatty acids	2.4 %
Crude fibre	6 %	Omega-3 fatty acids	1.2 %
Crude ash	7 %	DHA / EPA	0.4 % / 0.4 %
Moisture	12 %	Carbohydrate NFE	29 %
Calcium	1.4 %		

### 60%\*

QUALITY ANIMAL  
INGREDIENTS

+

### 40%\*

VEGETABLES, FRUIT,  
BOTANICALS & NUTRIENTS\*\*

+

### 0%\*

NO ARTIFICIAL COLOURS, FLAVOURS  
OR PRESERVATIVES ADDED IN OUR KITCHEN

\*Approximate and derived from the unprocessed state of the ingredients.

\*\*Our fresh ingredients use refrigeration as the sole method of preservation and our raw ingredients are frozen at the peak of freshness to preserve nutrients.

\*\*\*Produced in a facility that processes grains.

For more information please contact our Customer Care Team at [customer care@championpetfoods.com](mailto:customer care@championpetfoods.com).

# ACANA™

## DOG

# ADULT SMALL BREED

**FOR ALL SMALL BREED  
DOGS 1 YEAR AND OLDER**

Small-breed dogs have the same nutritional requirements as their larger dogs. This means they need a diet that is rich and varied in whole animal ingredients, in order to get the protein and nutrients they require for peak health. **ACANA Small Breed** is loaded with chicken and raw flounder, with the added nutrition of eggs, delivering everything your small-breed dog needs in order to stay happy, healthy, and strong.

## FEATURES

1. **60%\* QUALITY ANIMAL INGREDIENTS** | PROTEIN-RICH QUALITY ANIMAL INGREDIENTS
2. **FRESH OR RAW\*\* POULTRY, WILD-CAUGHT OR SUSTAINABLY FARMED FISH AND EGGS**
3. **VEGETABLES, FRUIT & BOTANICALS** | FRESH WHOLE PUMPKIN, GREENS, APPLES & PEARS
4. **NO ARTIFICIAL PRESERVATIVES, FLAVOURS OR COLOURS ADDED IN OUR KITCHEN**
5. **NO SOY, CORN, TAPIOCA OR WHEAT INGREDIENTS**

## ANALYTICAL CONSTITUENTS

Crude protein	31 %	Phosphorus	1.1 %
Fat content	17 %	Omega-6 fatty acids	2.6 %
Crude fibre	5 %	Omega-3 fatty acids	1 %
Crude ash	7 %	DHA / EPA	0.3 % / 0.3 %
Moisture	12 %	Carbohydrate NFE	28 %
Calcium	1.4 %		

### 60%\*

QUALITY ANIMAL  
INGREDIENTS

+

### 40%\*

VEGETABLES, FRUIT,  
BOTANICALS & NUTRIENTS\*\*

+

### 0%\*

NO ARTIFICIAL COLOURS, FLAVOURS  
OR PRESERVATIVES ADDED IN OUR KITCHEN

\*Approximate and derived from the unprocessed state of the ingredients.

\*\*Our fresh ingredients use refrigeration as the sole method of preservation and our raw ingredients are frozen at the peak of freshness to preserve nutrients.

\*\*\*Produced in a facility that processes grains.

For more information please contact our Customer Care Team at [customer care@championpetfoods.com](mailto:customer care@championpetfoods.com).





# ACANA™

## DOG

## SENIOR FOR ADULT DOGS 7 YEARS AND OLDER

Your senior dog needs a diet rich in animal protein, to support the development of lean muscle and to promote a healthy body weight. **ACANA Senior** features higher protein levels from chicken, raw flounder, and eggs, helping your dog maintain peak health. ACANA nourishes dogs naturally, keeping them healthy, happy, and strong.

### FEATURES

1. **65%\* QUALITY ANIMAL INGREDIENTS** | PROTEIN-RICH QUALITY ANIMAL INGREDIENTS
2. **FRESH OR RAW\*\* POULTRY, WILD-CAUGHT OR SUSTAINABLY FARMED FISH AND EGGS**
3. **VEGETABLES, FRUIT & BOTANICALS** | FRESH WHOLE PUMPKIN, GREENS, APPLES & PEARS
4. **NO ARTIFICIAL PRESERVATIVES, FLAVOURS OR COLOURS ADDED IN OUR KITCHEN**
5. **NO SOY, CORN, TAPIOCA OR WHEAT INGREDIENTS**

### ANALYTICAL CONSTITUENTS

Crude protein	33 %	Phosphorus	1.1 %
Fat content	14 %	Omega-6 fatty acids	2.2 %
Crude fibre	6 %	Omega-3 fatty acids	1 %
Crude ash	7 %	DHA / EPA	0.3 % / 0.3 %
Moisture	12 %	Carbohydrate NFE	28 %
Calcium	1.5 %		

## 65%\*

QUALITY ANIMAL  
INGREDIENTS

+

## 35%\*

VEGETABLES, FRUIT,  
BOTANICALS & NUTRIENTS\*\*

+

## 0%\*

NO ARTIFICIAL COLOURS, FLAVOURS  
OR PRESERVATIVES ADDED IN OUR KITCHEN

\*Approximate and derived from the unprocessed state of the ingredients.

\*\*Our fresh ingredients use refrigeration as the sole method of preservation and our raw ingredients are frozen at the peak of freshness to preserve nutrients.

\*\*\*Produced in a facility that processes grains.

For more information please contact our Customer Care Team at [customer@championpetfoods.com](mailto:customer@championpetfoods.com).



# ACANA™

## DOG



## SPORT & AGILITY

FOR DOGS OF ALL BREEDS & LIFE STAGES  
EXCEPT FOR GROWTH OF LARGE SIZE DOGS

Your high-energy dog is busy, whether they're racing around the dog park, or acing agility courses. That's why **ACANA Sport & Agility** is packed with protein and fat from animal sources, supporting sustained activity and endurance to keep up with your active dog. Featuring chicken, raw flounder, and eggs that are delivered to our kitchen fresh or raw\*\* by people we know and trust, ACANA nourishes dogs completely, keeping them happy, healthy, and strong.

### FEATURES

1. **75%\* QUALITY ANIMAL INGREDIENTS** | PROTEIN-RICH QUALITY ANIMAL INGREDIENTS
2. **FRESH OR RAW\*\* POULTRY, WILD-CAUGHT OR SUSTAINABLY FARMED FISH AND EGGS**
3. **VEGETABLES, FRUIT & BOTANICALS** | FRESH WHOLE PUMPKIN, GREENS, APPLES & PEARS
4. **NO ARTIFICIAL PRESERVATIVES, FLAVOURS OR COLOURS ADDED IN OUR KITCHEN**
5. **NO SOY, CORN, TAPIOCA OR WHEAT INGREDIENTS**

### ANALYTICAL CONSTITUENTS

Crude protein	35 %	Phosphorus	1.1 %
Fat content	22 %	Omega-6 fatty acids	2.7 %
Crude fibre	5 %	Omega-3 fatty acids	1.2 %
Crude ash	8 %	DHA / EPA	0.4 % / 0.4 %
Moisture	12 %	Carbohydrate NFE	18 %
Calcium	1.7 %		

## 75%\*

QUALITY ANIMAL  
INGREDIENTS

+

## 25%\*

VEGETABLES, FRUIT,  
BOTANICALS & NUTRIENTS\*\*

+

## 0%\*

NO ARTIFICIAL COLOURS, FLAVOURS  
OR PRESERVATIVES ADDED IN OUR KITCHEN

\*Approximate and derived from the unprocessed state of the ingredients.

\*\*Our fresh ingredients use refrigeration as the sole method of preservation and our raw ingredients are frozen at the peak of freshness to preserve nutrients.

\*\*\*Produced in a facility that processes grains.

For more information please contact our Customer Care Team at [customer care@championpetfoods.com](mailto:customer care@championpetfoods.com).

# ACANA™

## DOG



## LIGHT & FIT FOR ADULT DOGS OF ALL BREEDS

A diet rich in protein promotes lean muscle mass and a healthy body weight, while keeping your dog satisfied and happy. **ACANA Light & Fit** is brimming with meat, organs and bone from chicken and raw flounder, plus the delicious nutrition of eggs.

### FEATURES

1. **65%\* QUALITY ANIMAL INGREDIENTS** | PROTEIN-RICH QUALITY ANIMAL INGREDIENTS
2. **FRESH OR RAW\*\* POULTRY, WILD-CAUGHT OR SUSTAINABLY FARMED FISH AND EGGS**
3. **VEGETABLES, FRUIT & BOTANICALS** | FRESH WHOLE PUMPKIN, GREENS, APPLES & PEARS
4. **NO ARTIFICIAL PRESERVATIVES, FLAVOURS OR COLOURS ADDED IN OUR KITCHEN**
5. **NO SOY, CORN, TAPIOCA OR WHEAT INGREDIENTS**

### ANALYTICAL CONSTITUENTS

Crude protein	35 %	Phosphorus	1.1 %
Fat content	11 %	Omega-6 fatty acids	2.2 %
Crude fibre	8 %	Omega-3 fatty acids	0.9 %
Crude ash	7 %	DHA / EPA	0.3 % / 0.3 %
Moisture	12 %	Carbohydrate NFE	26 %
Calcium	1.7 %		

# 65%\*

QUALITY ANIMAL  
INGREDIENTS

+

# 35%\*

VEGETABLES, FRUIT,  
BOTANICALS & NUTRIENTS\*\*

+

# 0%\*

NO ARTIFICIAL COLOURS, FLAVOURS  
OR PRESERVATIVES ADDED IN OUR KITCHEN

\*Approximate and derived from the unprocessed state of the ingredients.

\*\*Our fresh ingredients use refrigeration as the sole method of preservation and our raw ingredients are frozen at the peak of freshness to preserve nutrients.

\*\*\*Produced in a facility that processes grains.

For more information please contact our Customer Care Team at [customerccare@championpetfoods.com](mailto:customerccare@championpetfoods.com).



# PRODUCT RANGE

HIGHEST PROTEIN



SIZE	WILD PRAIRIE		GRASSLANDS		RANCHLANDS		PACIFICA	
		2 kg 6 kg 11,4 kg		2 kg 6 kg 11,4 kg		2 kg 6 kg 11,4 kg		2 kg 6 kg 11,4 kg
TOP 5 INGREDIENTS	Fresh chicken, raw turkey, fresh chicken giblets (liver, heart), chicken meal, herring meal.		Raw lamb, raw duck, eggs, lamb meal, herring meal.		Raw beef, raw lamb, raw pork, beef meal, lamb meal.		Raw whole herring, raw whole mackerel, raw flounder, herring meal, mackerel meal.	
	This diet features a poultry and fish blend that is easy to digest.		A good addition to a rotational diet, and a good option for picky eaters.		A good addition to a rotational diet, and a good option for picky eaters.		Higher Omega content. Great for skin and coat health. Great for sensitive stomachs.	

\* Produced in a facility that processes grains.

# ACANA™

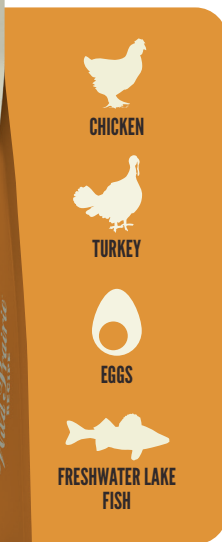
HIGHEST PROTEIN†

# Wild Prairie™

FOR DOGS OF ALL BREEDS AND LIFE STAGES  
EXCEPT FOR GROWTH OF LARGE SIZE DOGS

Featuring fresh or raw\*\* chicken and turkey, eggs, and freshwater lake fish, **ACANA Wild Prairie** is brimming with poultry, fish, organs, and bone, giving your dog the nutrients they need for peak health, in their most natural and nourishing form. Our ingredients are delivered to our kitchen fresh or raw\*\* by people we know and trust, for a recipe that is richly nutritious and delicious, keeping your dog happy, healthy, and strong.

- ✓ **FIRST 3 INGREDIENTS FRESH OR RAW CHICKEN, TURKEY & CHICKEN GIBLETS**
- ✓ **FREEZE-DRIED COATED FOR TASTE**
- ✓ **PREBIOTICS AND FIBRE TO SUPPORT HEALTHY DIGESTION**



## ANALYTICAL CONSTITUENTS

Crude protein	35 %	Phosphorus	1.1%
Fat content	17 %	Omega-6 fatty acids	2.6 %
Crude fibre	6 %	Omega-3 fatty acids	0.9 %
Crude ash	7 %	DHA / EPA	0.2 % / 0.2 %
Moisture	12 %	Carbohydrate NFE	25 %
Calcium	1.5 %		

**70%\***

QUALITY ANIMAL  
INGREDIENTS

+

**30%\***

VEGETABLES, FRUIT,  
BOTANICALS & NUTRIENTS\*\*

+

**0%\***

NO ARTIFICIAL COLOURS, FLAVOURS  
OR PRESERVATIVES ADDED IN OUR KITCHEN



**NO GRAIN  
INGREDIENTS \*\*\***

\*Approximate and derived from the unprocessed state of the ingredient.

\*\*Our fresh ingredients use refrigeration as the sole method of preservation and our raw ingredients are frozen at the peak of freshness to preserve nutrients.

\*\*\*Produced in a facility that processes grains.

\*When compared to ACANA dog & singles dry dog food.

For more information please contact our Customer Care Team at [customercare@championpetfoods.com](mailto:customercare@championpetfoods.com).

# ACANA™

HIGHEST PROTEIN†

# Grasslands™

FOR DOGS OF ALL BREEDS AND LIFE STAGES  
EXCEPT FOR GROWTH OF LARGE SIZE DOGS

Inspired by our vast grasslands and cold northern lakes, **ACANA Grasslands** is brimming with lamb, duck, eggs and freshwater lake fish, in WholePrey ratios of meat, organs and bone. Our ingredients are delivered to our kitchen fresh or raw\*\* by people we know and trust, giving your dog the best ingredients and a recipe that will keep them happy, healthy, and strong.

- ✓ **FIRST 3 INGREDIENTS FRESH OR RAW LAMB, DUCK & EGGS**
- ✓ **FREEZE-DRIED COATED FOR TASTE**
- ✓ **PREBIOTICS AND FIBRE TO SUPPORT HEALTHY DIGESTION**



LAMB



DUCK



EGGS



FRESHWATER LAKE  
FISH

## ANALYTICAL CONSTITUENTS

Crude protein	35 %	Phosphorus	1.2 %
Fat content	17 %	Omega-6 fatty acids	2.3 %
Crude fibre	6 %	Omega-3 fatty acids	1 %
Crude ash	8 %	DHA / EPA	0.2 % / 0.2 %
Moisture	12 %	Carbohydrate NFE	25 %
Calcium	1.7 %		

**70%\***

QUALITY ANIMAL  
INGREDIENTS

+

**30%\***

VEGETABLES, FRUIT,  
BOTANICALS & NUTRIENTS\*\*

+

**0%\***

NO ARTIFICIAL COLOURS, FLAVOURS  
OR PRESERVATIVES ADDED IN OUR KITCHEN



**NO GRAIN  
INGREDIENTS\*\*\***

\*Approximate and derived from the unprocessed state of the ingredient.

\*\*Our fresh ingredients use refrigeration as the sole method of preservation and our raw ingredients are frozen at the peak of freshness to preserve nutrients.

\*\*\*Produced in a facility that processes grains.

\*When compared to ACANA dog & singles dry dog food.

For more information please contact our Customer Care Team at [customercare@championpetfoods.com](mailto:customercare@championpetfoods.com).



# ACANA™

HIGHEST PROTEIN\*

# Ranchlands™

FOR DOGS OF ALL BREEDS AND LIFE STAGES  
EXCEPT FOR GROWTH OF LARGE SIZE DOGS

ACANA Ranchlands is loaded with raw ranch-raised meats and freshwater lake fish. Mirroring the diet Mother Nature would provide for your dog in the wild, we use whole animal ingredients including meat, fish, organs and bone so your dog is getting everything they need to stay happy, healthy, and strong.

- ✓ FIRST 3 INGREDIENTS FRESH OR RAW BEEF, LAMB & PORK
- ✓ FREEZE-DRIED COATED FOR TASTE
- ✓ PREBIOTICS AND FIBRE TO SUPPORT HEALTHY DIGESTION



BEEF



LAMB



PORK



BISON

## ANALYTICAL CONSTITUENTS

Crude protein	35 %	Calcium	1.8 %
Fat content	17 %	Phosphorus	1.3 %
Crude fibre	6 %	Omega-6 fatty acids	2 %
Crude ash	8.5 %	Omega-3 fatty acids	1 %
Moisture	12 %	DHA / EPA	0.2 % / 0.2 %

70%\*

QUALITY ANIMAL  
INGREDIENTS

+

30%\*

VEGETABLES, FRUIT,  
BOTANICALS & NUTRIENTS\*\*

+

0%\*

NO ARTIFICIAL COLOURS, FLAVOURS  
OR PRESERVATIVES ADDED IN OUR KITCHEN



NO GRAIN  
INGREDIENTS\*\*\*

\*Approximate and derived from the unprocessed state of the ingredient.

\*\*Our fresh ingredients use refrigeration as the sole method of preservation and our raw ingredients are frozen at the peak of freshness to preserve nutrients.

\*\*\*Produced in a facility that processes grains.

†When compared to ACANA dog & singles dry dog food.

For more information please contact our Customer Care Team at [customercare@championpetfoods.com](mailto:customercare@championpetfoods.com).

# ACANA™

HIGHEST PROTEIN†

## Pacifica™

FOR DOGS OF ALL BREEDS  
AND LIFE STAGES

A diet rich in whole fish delivers essential nutrients, like Omega fatty acids, naturally and in their most nourishing form.

**ACANA Pacifica** is bursting with wild-caught herring, mackerel, flounder, hake, and rockfish that are delivered to our kitchen fresh or raw\*\* from people we know and trust. Using WholePrey ratios of fish, organs, and bone, ACANA gives your dog everything they need in order to stay happy, healthy, and strong, with a delicious taste that they'll love.

- ✓ **FIRST 3 INGREDIENTS FRESH OR RAW HERRING, MACKEREL & FLOUNDER**
- ✓ **FREEZE-DRIED COATED FOR TASTE**
- ✓ **PREBIOTICS AND FIBRE TO SUPPORT HEALTHY DIGESTION**



HERRING

MACKEREL

FLOUNDER

HAKE

### ANALYTICAL CONSTITUENTS

Crude protein	35 %	Phosphorus	1.1 %
Fat content	17 %	Omega-6 fatty acids	2 %
Crude fibre	6 %	Omega-3 fatty acids	2 %
Crude ash	7 %	DHA / EPA	0.9 % / 0.7 %
Moisture	12 %	Carbohydrate NFE	25 %
Calcium	1.3 %		

**70%\***  
QUALITY ANIMAL  
INGREDIENTS

+

**30%\***  
VEGETABLES, FRUIT,  
BOTANICALS & NUTRIENTS\*\*

+

**0%\***  
NO ARTIFICIAL COLOURS, FLAVOURS  
OR PRESERVATIVES ADDED IN OUR KITCHEN



**NO GRAIN  
INGREDIENTS\*\*\***

\*Approximate and derived from the unprocessed state of the ingredient.

\*\*Our fresh ingredients use refrigeration as the sole method of preservation and our raw ingredients are frozen at the peak of freshness to preserve nutrients.

\*\*\*Produced in a facility that processes grains.

†When compared to ACANA dog & singles dry dog food.

For more information please contact our Customer Care Team at [customercare@championpetfoods.com](mailto:customercare@championpetfoods.com).

# PRODUCT RANGE

**SINGLES**



SIZE	 <b>GRASS-FED LAMB</b> 2 kg 6 kg 11,4 kg	 <b>FREE-RUN DUCK</b> 2 kg 6 kg 11,4 kg	 <b>YORKSHIRE PORK</b> 2 kg 6 kg 11,4 kg
TOP 5 INGREDIENTS	Raw grass-fed lamb, lamb meat meal, whole green peas, whole red lentils, raw lamb liver.	Fresh duck, duck meat meal, whole green peas, whole red lentils, fresh duck giblets (liver, heart, kidney).	Fresh Yorkshire pork, pork meat meal, whole green peas, whole red lentils, fresh pork liver.
HELPFUL INFORMATION	Single Protein recipe Great for healthy dogs with diet sensitivities.	Single Protein recipe Great option for dogs with diet sensitivities or allergies.	Single Protein recipe Great option for picky dogs with sensitive stomachs.

\* Produced in a facility that processes grains.



# ACANA™

## SINGLES



# GRASS-FED LAMB

FOR DOGS OF ALL BREEDS AND LIFE STAGES WITH FOOD SENSITIVITIES

Limited ingredient doesn't mean less meat. **ACANA Grass-Fed Lamb** is loaded with 50%\* quality lamb ingredients in WholePrey ratios, complemented with tasty, whole Red Delicious apples, providing your dog with the protein and nutrients they need in order to stay happy, healthy, and strong.

## FEATURES

1. **50%\* LAMB INGREDIENTS** | 31% PROTEIN
2. **1/2 RAW\*\* LAMB** | NUTRIENT-RICH
3. **WHOLEPREY** | LAMB, ORGANS AND BONE – SUPERFOOD FOR DOGS
4. **FREEZE-DRIED INFUSED** | INTENSE NATURAL FLAVOUR
5. **WHOLE VEGETABLES, FRUIT & BOTANICALS** | FRESH

Made with  
**FRESH OR RAW\*\***

SINGLE ANIMAL PROTEIN FROM LAMB



LAMB



RED DELICIOUS  
APPLE



LAVENDER FLOWERS

## BIOLOGICALLY APPROPRIATE RATIOS

**50%\*** LAMB  
INCLUDING MEAT, ORGANS & BONE

**50%\*** VEGETABLES, FRUIT & BOTANICALS  
PLUS VIT.E, ZINC & COPPER - OUR ONLY SUPPLEMENTS

**0%** NO GRAIN, POTATO  
NO GLUTENS OR PLANT PROTEIN CONCENTRATES

## ANALYTICAL CONSTITUENTS

Crude protein	31 %
Fat content	15 %
Crude fibre	5 %
Crude ash	7.5 %
Moisture	12 %
Calcium	1.5 %
Phosphorus	1.1 %
Omega-6 fatty acids	1.8 %
Omega-3 fatty acids	0.8 %
DHA / EPA	0.15 % / 0.1 %
Carbohydrate NFE	29.5 %

## WHOLEPREY DIET

LAMB | ORGANS | BONE

Mirroring nature, our WholePrey ingredients feature a richly nourishing balance of fresh and raw\*\* lamb, organs, and bone, providing nutrients in their most natural and nourishing form.

\*Approximate and derived from the unprocessed state of the ingredients.

\*\*Our fresh ingredients use refrigeration as the sole method of preservation and our raw ingredients are frozen at the peak of freshness to preserve nutrients.

For more information please contact our Customer Care Team at [customer care@championpetfoods.com](mailto:customer care@championpetfoods.com).

# ACANA™

## SINGLES



# FREE-RUN DUCK FOR DOGS OF ALL BREEDS AND LIFE STAGES WITH FOOD SENSITIVITIES

Limited ingredient doesn't mean less meat. **ACANA Free-Run Duck** is loaded with 50%\* quality duck ingredients in WholePrey ratios, complemented with whole, delicious Bartlett pears, providing your dog with the protein and nutrients they need in order to stay happy, healthy, and strong.

## FEATURES

1. **50%\* DUCK INGREDIENTS** | 31% PROTEIN
2. **1/2 FRESH OR RAW™ DUCK** | NUTRIENT-RICH
3. **WHOLEPREY** | DUCK, ORGANS, AND BONE – SUPERFOOD FOR DOGS
4. **FREEZE-DRIED INFUSED** | INTENSE NATURAL FLAVOUR
5. **WHOLE VEGETABLES, FRUIT & BOTANICALS** | FRESH

Made with  
**FRESH OR RAW™**  
— SINGLE ANIMAL PROTEIN FROM DUCK —



DUCK



BARTLETT PEARS



LAVENDER FLOWERS

## BIOLOGICALLY APPROPRIATE RATIOS

- 50%\* DUCK**  
INCLUDING MEAT, ORGANS & BONE
- 50%\* VEGETABLES, FRUIT & BOTANICALS**  
PLUS VIT.E, ZINC & COPPER - OUR ONLY SUPPLEMENTS
- 0% NO GRAIN, POTATO**  
NO GLUTENS OR PLANT PROTEIN CONCENTRATES

## ANALYTICAL CONSTITUENTS

Crude protein	31 %
Fat content	15 %
Crude fibre	5 %
Crude ash	7.5 %
Moisture	12 %
Calcium	1.3 %
Phosphorus	0.9 %
Omega-6 fatty acids	2.2 %
Omega-3 fatty acids	0.8 %
DHA / EPA	0.15 % / 0.1 %
Carbohydrate NFE	29.5 %

## WHOLEPREY DIET DUCK | ORGANS | BONE

Mirroring nature, our WholePrey ingredients feature a richly nourishing balance of fresh and raw™ poultry, organs and bone, providing nutrients in their most natural and nourishing form.

\*Approximate and derived from the unprocessed state of the ingredients.

†Our fresh ingredients use refrigeration as the sole method of preservation and our raw ingredients are frozen at the peak of freshness to preserve nutrients.

For more information please contact our Customer Care Team at [customer care@championpetfoods.com](mailto:customer care@championpetfoods.com).

# ACANA™

## SINGLES



# YORKSHIRE PORK

FOR DOGS OF ALL BREEDS AND LIFE STAGES WITH FOOD SENSITIVITIES

Limited ingredient doesn't mean less meat. **ACANA Yorkshire Pork** is loaded with quality pork ingredients in WholePrey ratios, complemented with whole, delicious butternut squash, providing your dog with the protein, nutrients, and fibre they need in order to stay happy, healthy, and strong.

## FEATURES

1. **50%\* YORKSHIRE PORK** | 31% PROTEIN
2. **1/2 FRESH OR RAW™ PORK** | NUTRIENT-RICH
3. **WHOLEPREY** | PORK, ORGANS AND BONE – SUPERFOOD FOR DOGS
4. **FREEZE-DRIED INFUSED** | INTENSE NATURAL FLAVOUR
5. **WHOLE VEGETABLES, FRUIT & BOTANICALS** | FRESH

Made with  
**FRESH OR RAW™**  
— SINGLE ANIMAL PROTEIN FROM PORK —

  
YORKSHIRE  
PORK

  
BUTTERNUT  
SQUASH

  
LAVENDER FLOWERS

## BIOLOGICALLY APPROPRIATE RATIOS

**50%\*** **YORKSHIRE PORK**  
INCLUDING MEAT, ORGANS & BONE

**50%\*** **VEGETABLES, FRUIT & BOTANICALS**  
PLUS VIT.E, ZINC & COPPER - OUR ONLY SUPPLEMENTS

**0%** **NO GRAIN, POTATO**  
NO GLUTENS OR PLANT PROTEIN CONCENTRATES

## ANALYTICAL CONSTITUENTS

Crude protein	31 %
Fat content	15 %
Crude fibre	5 %
Crude ash	7.5 %
Moisture	12 %
Calcium	1.2 %
Phosphorus	0.9 %
Omega-6 fatty acids	2.6 %
Omega-3 fatty acids	0.9 %
DHA / EPA	0.15 % / 0.1 %
Carbohydrate NFE	29.5 %

## WHOLEPREY DIET PORK | ORGANS | BONE

Mirroring nature, our WholePrey ingredients feature a richly nourishing balance of fresh and raw™ meat, organs, and bone, providing nutrients in their most natural and nourishing form.

\*Approximate and derived from the unprocessed state of the ingredients.

™Our fresh ingredients use refrigeration as the sole method of preservation and our raw ingredients are frozen at the peak of freshness to preserve nutrients.

For more information please contact our Customer Care Team at [customer care@championpetfoods.com](mailto:customer care@championpetfoods.com).



# PRODUCT RANGE

**HIGH-PROTEIN  
- DOG TREATS -**

SIZE	 <b>CHICKEN LIVER</b>	 <b>PORK LIVER</b>	 <b>TURKEY LIVER</b>	 <b>BEEF LIVER</b>
INGREDIENT LIST	<p>100g</p> <p>Fresh chicken liver, dehydrated sweet potato, dehydrated chicken, fresh chicken, natural flavour, chicken fat</p>	<p>100g</p> <p>Raw pork liver, dehydrated sweet potato, dehydrated pork, raw pork, natural flavour, pork fat</p>	<p>100g</p> <p>Raw turkey liver, dehydrated sweet potato, dehydrated turkey, fresh turkey, natural flavour, chicken fat</p>	<p>100g</p> <p>Raw beef liver, dehydrated sweet potato, dehydrated beef , raw ranch-raised beef, natural flavour, beef fat</p>
HELPFUL INFORMATION	<p>Chicken is easy on the tummies and liver provides a lean source of protein with a savoury flavour that dogs love.</p>	<p>Pork has a savoury taste that dogs love and pork liver provides an excellent source of protein.</p>	<p>Turkey is easy on the tummies and liver provides a lean source of protein with a savoury flavour that dogs love.</p>	<p>Beef has a savoury taste that dogs love and beef liver provides an excellent source of protein.</p>

# ACANA™

**HIGH-PROTEIN  
— DOG TREATS —**

**TREATING YOUR DOG  
NEVER FELT SO GOOD**

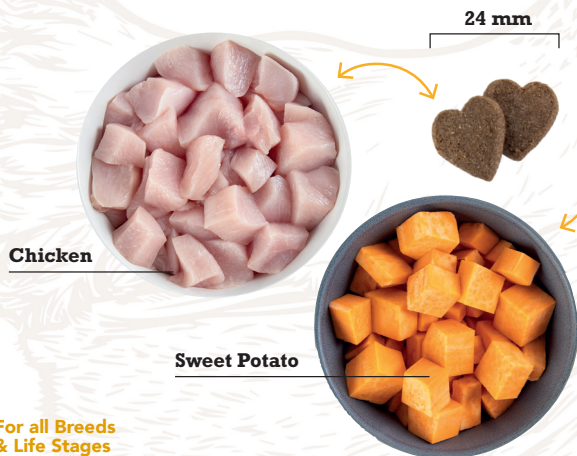


## CRUNCHY CHICKEN LIVER RECIPE



**GRAIN-FREE  
SINGLE PROTEIN**

- Inclusions of sweet potatoes are rich in fibre to support **healthy digestion** and overall **gut health**.
- Chicken is easy on the tummies and liver provides a **lean source of protein** with a savoury flavor that dogs love.



**For all Breeds  
& Life Stages**



**TREAT | SNACK | REWARD**

**85%\* OF PROTEIN FROM  
ANIMAL INGREDIENTS**

**5** MADE WITH  
**SIMPLE  
INGREDIENTS**

**Chicken Liver**

**Sweet Potato**

**Dehydrated Chicken**

**Fresh Chicken**

**Chicken Fat**

PLUS NATURAL ANTIOXIDANTS,  
PRESERVATIVES & FLAVOURS

**ANALYTICAL CONSTITUENTS** : Crude protein (38%),  
Crude fat (10%), Crude fibre (5%), Moisture (10%)

**INGREDIENTS** : Fresh chicken liver (30%), dehydrated sweet potato  
(30%), dehydrated chicken (30%), fresh chicken (4%), natural flavour,  
chicken fat (2.5%)

\*85% of 33% to 38% crude protein, approximate and derived from unprocessed state of ingredients.



# ACANA™

**HIGH-PROTEIN  
— DOG TREATS —**

**TREATING YOUR DOG  
NEVER FELT SO GOOD**

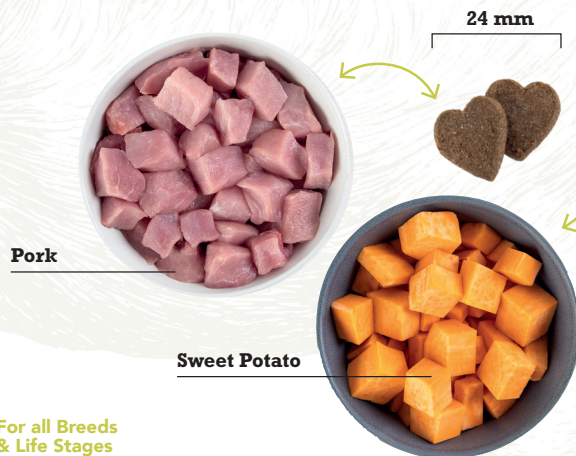


## CRUNCHY PORK LIVER RECIPE



**GRAIN-FREE  
SINGLE PROTEIN**

- Inclusions of sweet potatoes are rich in fibre to support **healthy digestion** and overall **gut health**.
- Pork has a savoury taste that dog love and pork liver provides an **excellent source of protein**.



**For all Breeds  
& Life Stages**



**TREAT | SNACK | REWARD**

**85%** OF PROTEIN FROM  
ANIMAL INGREDIENTS

**5** MADE WITH  
SIMPLE  
INGREDIENTS

Pork Liver

Sweet Potato

Dehydrated Pork

Pork Meat

Pork Fat

PLUS NATURAL ANTIOXIDANTS,  
PRESERVATIVES & FLAVOURS

**ANALYTICAL CONSTITUENTS** : Crude protein (33%), Crude fat (11%),  
Crude fibre (5%), Moisture (10%).

**INGREDIENTS** : Raw pork liver (32%), dehydrated sweet potato (29%),  
dehydrated pork (29%), raw pork (4%), natural flavour, pork fat (2.5%)



0 64992 71659 2



0 64992 71662 2

\*85% of 33% to 38% crude protein, approximate and derived from unprocessed state of ingredients.



# ACANA™

**HIGH-PROTEIN  
— DOG TREATS —**

**TREATING YOUR DOG  
NEVER FELT SO GOOD**

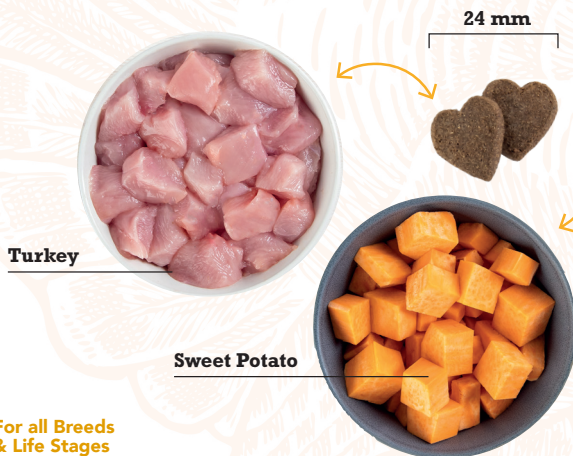


## CRUNCHY TURKEY LIVER RECIPE



**GRAIN-FREE**

- Inclusions of sweet potatoes are rich in fibre to support **healthy digestion** and overall **gut health**.
- Turkey is easy on the tummies and liver provides a **lean source of protein** with a savoury flavor that dogs love.



**For all Breeds  
& Life Stages**



**TREAT | SNACK | REWARD**

**85%** OF PROTEIN FROM  
ANIMAL INGREDIENTS

**5** MADE WITH  
SIMPLE  
INGREDIENTS

**Turkey Liver**

**Sweet Potato**

**Dehydrated Turkey**

**Raw Turkey**

**Chicken Fat**

PLUS NATURAL ANTIOXIDANTS,  
PRESERVATIVES & FLAVOURS

**ANALYTICAL CONSTITUENTS** : Crude protein (34%), Crude fat (11%),  
Crude fibre (5%), Moisture (10%).

**INGREDIENTS** : Raw turkey liver (30%), dehydrated sweet potato (30%),  
dehydrated turkey (30%), raw turkey (4%), natural flavour, chicken fat (2.5%)



\*85% of 33% to 38% crude protein, approximate and derived from unprocessed state of ingredients.

# ACANA™

**HIGH-PROTEIN  
— DOG TREATS —**

**TREATING YOUR DOG  
NEVER FELT SO GOOD**

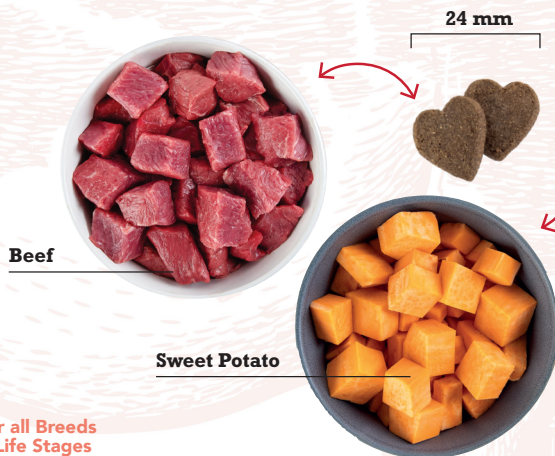


## CRUNCHY BEEF LIVER RECIPE



**GRAIN-FREE  
SINGLE PROTEIN**

- Inclusions of sweet potatoes are rich in fibre to support **healthy digestion** and overall **gut health**.
- Beef has a savory taste that dog love and beef liver provides an **excellent source of protein**.



**For all Breeds  
& Life Stages**



**TREAT | SNACK | REWARD**

**85%** OF PROTEIN FROM  
ANIMAL INGREDIENTS

**5** MADE WITH  
SIMPLE  
INGREDIENTS

**Beef Liver**

**Sweet Potato**

**Dehydrated Beef**

**Beef Meat**

**Beef Fat**

PLUS NATURAL ANTIOXIDANTS,  
PRESERVATIVES & FLAVOURS

**ANALYTICAL CONSTITUENTS** : Crude protein (38%),  
Crude fat (10%), Crude fiber (5%), Moisture (10%)

**INGREDIENTS** : Raw beef liver (32%), dehydrated sweet potato  
(29%), dehydrated beef (29%), raw ranch-raised beef (4%), natural  
flavour, beef fat (2.5%)

\*85% of 33% to 38% crude protein, approximate and derived from unprocessed state of ingredients.



**ACANA™**